



**Reliance Gold Project  
Gold Bridge, B.C.**

**KEG Conference**

**Darren O'Brien – VP Exploration**

**April 9, 2024**

## Corporate Disclosure

*The information contained herein, while obtained from sources which we believe are reliable, is not guaranteed as to its accuracy or completeness. The company is an exploration stage mineral resource exploration company and none of its mineral projects have yet to be proven to be economic. The contents of this presentation is for information purposes only and does not constitute an offer to sell or a solicitation to purchase any securities referred to herein.*

### **Forward-looking Statements**

*This presentation contains “forward-looking information” within the meaning of applicable Canadian securities regulations. All statements other than statements of historical fact herein, including, without limitation, statements regarding the company’s plans, goals or objectives and future exploration, development, potential mineralization, exploration results and future plans are forward-looking statements that involve various risks and uncertainties. There can be no assurance that such statements will prove to be accurate, and actual results and future events could differ materially from those anticipated in such statements. Readers are advised not to place an undue reliance on forward-looking statements.*

## Endurance Gold – Active Projects





# Reliance Gold Project

## Bralorne Camp, Gold Bridge, B.C.

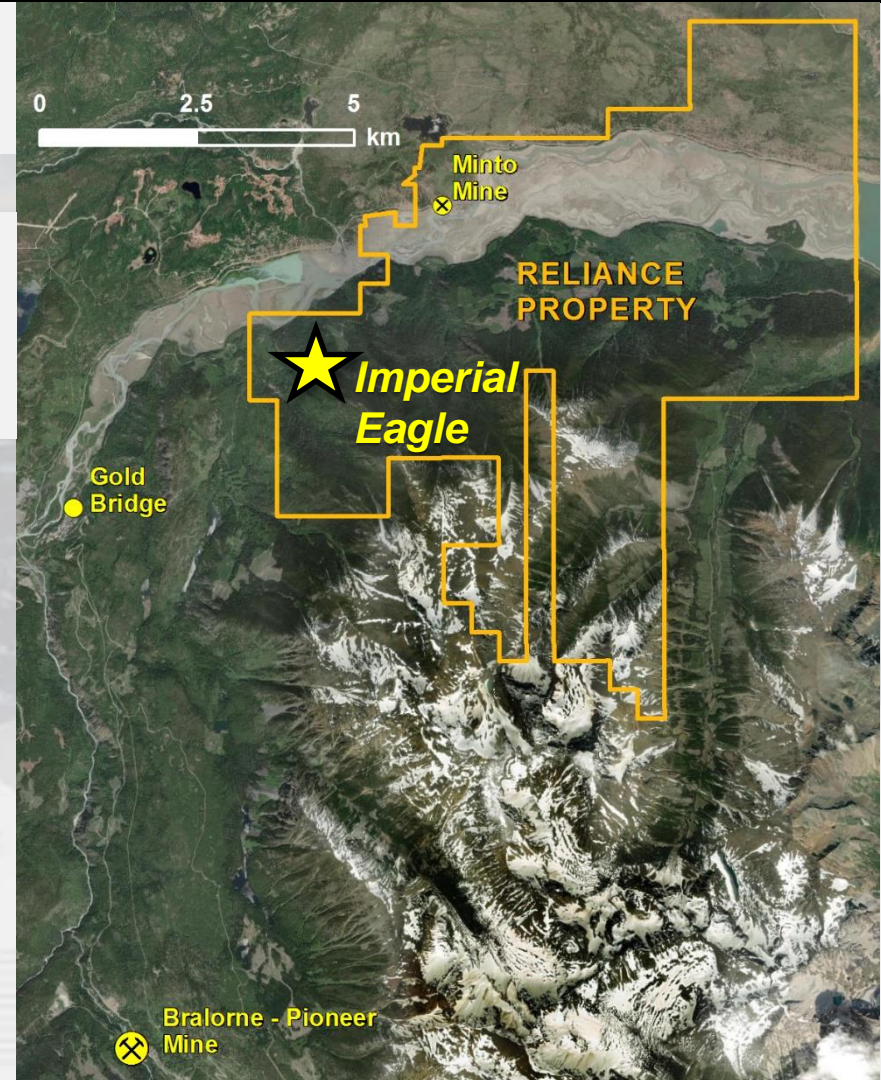
### New Surface Discovery

10 km from historic Bralorne Camp  
(+4 million ounces of historic production)



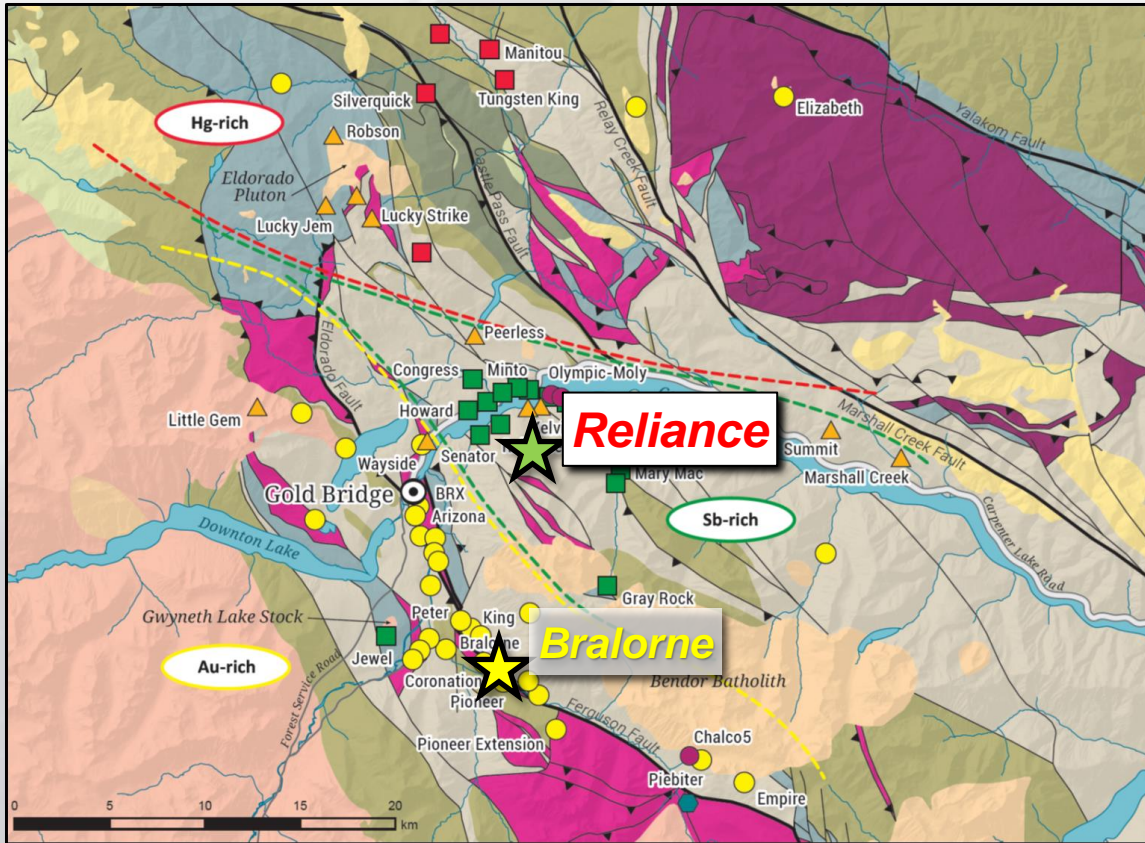
4 hour Drive  
from Vancouver

100 km West of  
Lillooet

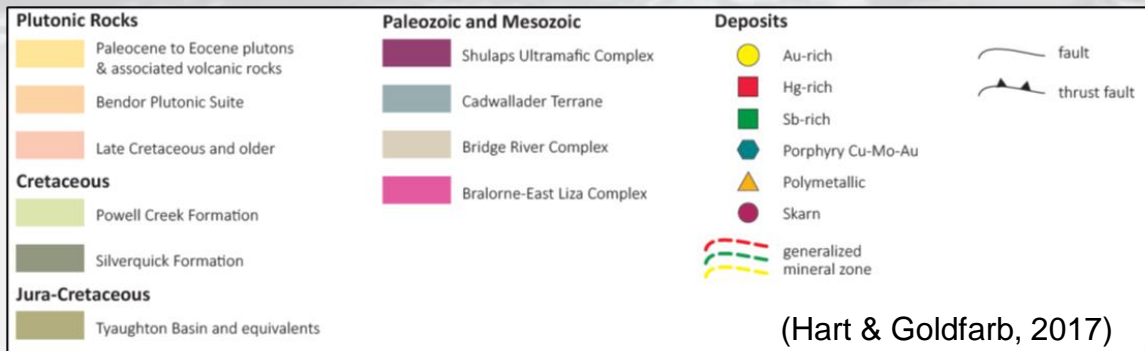




# Bridge River Terrane

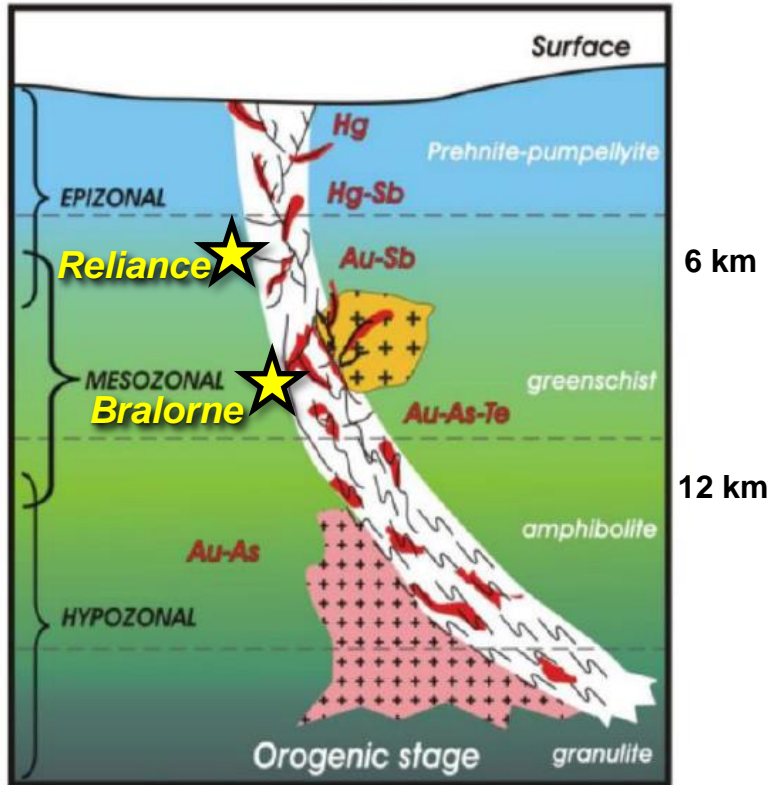


- **Accretionary Oceanic Basalts**
  - Lesser ribbon chert, argillite and limestone
  - Greenschist-facies
  - Mississippian to Mid-Jurassic
- **Coast Plutonic Complex to the west**
  - Mid-Cretaceous
- **71 to 64 Ma age mineralization across all terranes (coeval)**
- **Metal zonation suggest depth of orogenic exposure**
  - Au-rich (west)
  - Sb-As-Au (central)
  - Hg-Sb (east)



# Orogenic Deposit Model

Compressional / transpressional environment



pp  
g  
a  
gran  
Metamorphic grade of host rocks

Ore bodies

++  
++  
Granitoid

++++  
++++  
Gneissic rocks

Shear zone  
brittle structure  
ductile structure

(Idrus et al., 2017)

- Defines metal zonation in compressional and transpressional deformation zones
  - Coast Plutonic emplacement
  - Regional faults change from sinistral to dextral strike-slip movement (64 Ma)
- Bralorne-Pioneer veins deposited at 300-400°C
  - Mesozonal orogenic vein model
- Reliance Gold Deposit
  - Gold-Antimony association
  - Cataclastic breccias with arsenopyrite infill matrix
  - Coxcomb and cockade quartz-carbonate breccia veins with massive clots of stibnite
  - Brittle-ductile deformation
- ‘Epizonal’ Orogenic Deposit
  - Transitional textural change from mesozonal

**Historic antimony prospect** with small scale mining going back to 1915

## **1985 to 2008 Early Gold Exploration**

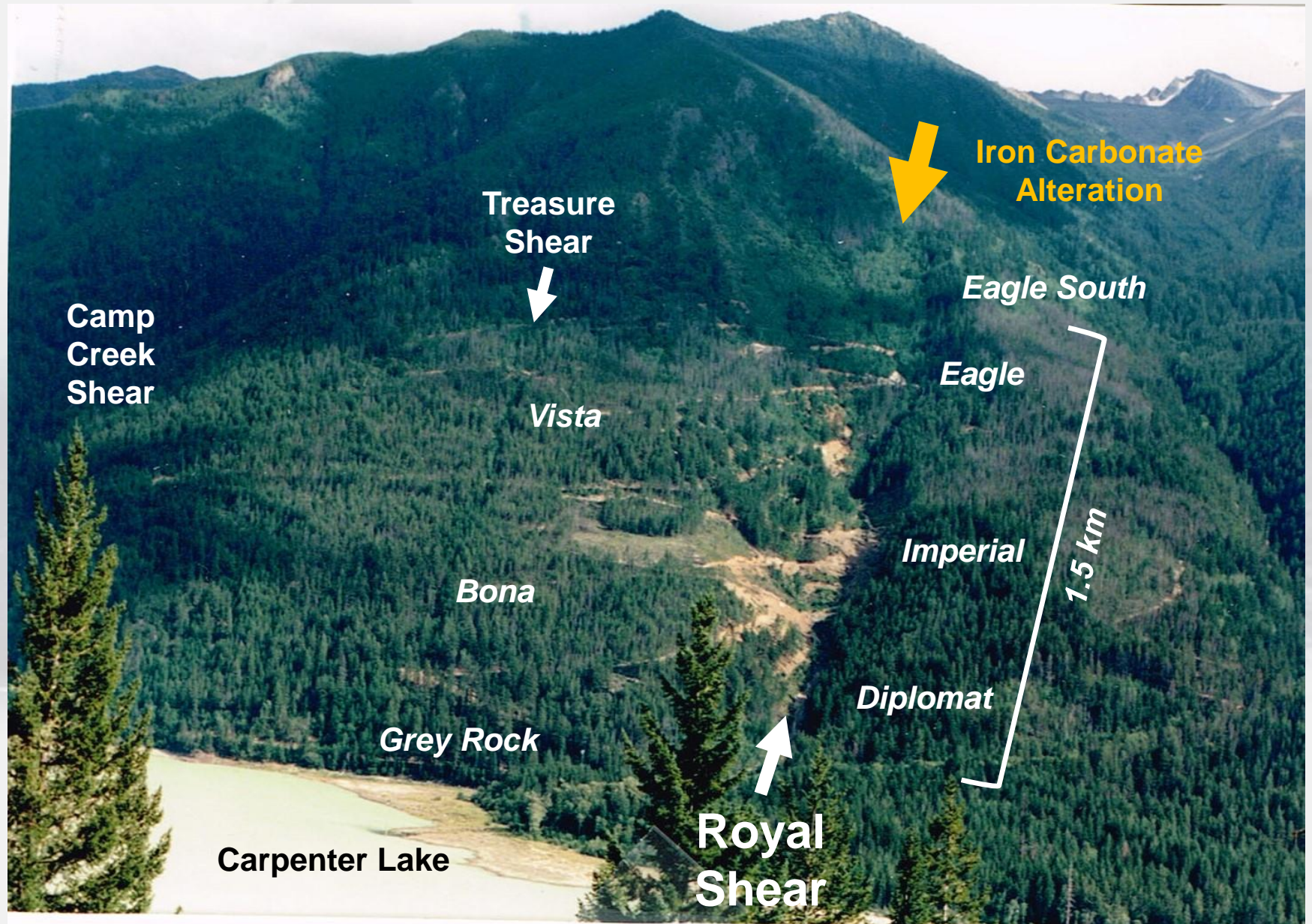
- 1986 drill discovery of the Imperial Zone
- Property never systematically explored
- Claims lapsed in 2018

## **2020 to 2023 Endurance Gold**

- 1,552 Biogeochem samples (Douglas Fir twigs)
- 1,909 Soil Samples (primarily talus-fines) – **First Gold-in-Soil Survey**
- 819 Channel samples / 1,513 metres – **Significant New Gold in O/C**
- 3DIP geophysics / airborne magnetics / LiDAR
- **84 RC holes / 6,046 metres**
- **82 DDH holes / 17,907 metres**



# Reliance Gold Project (Looking South)





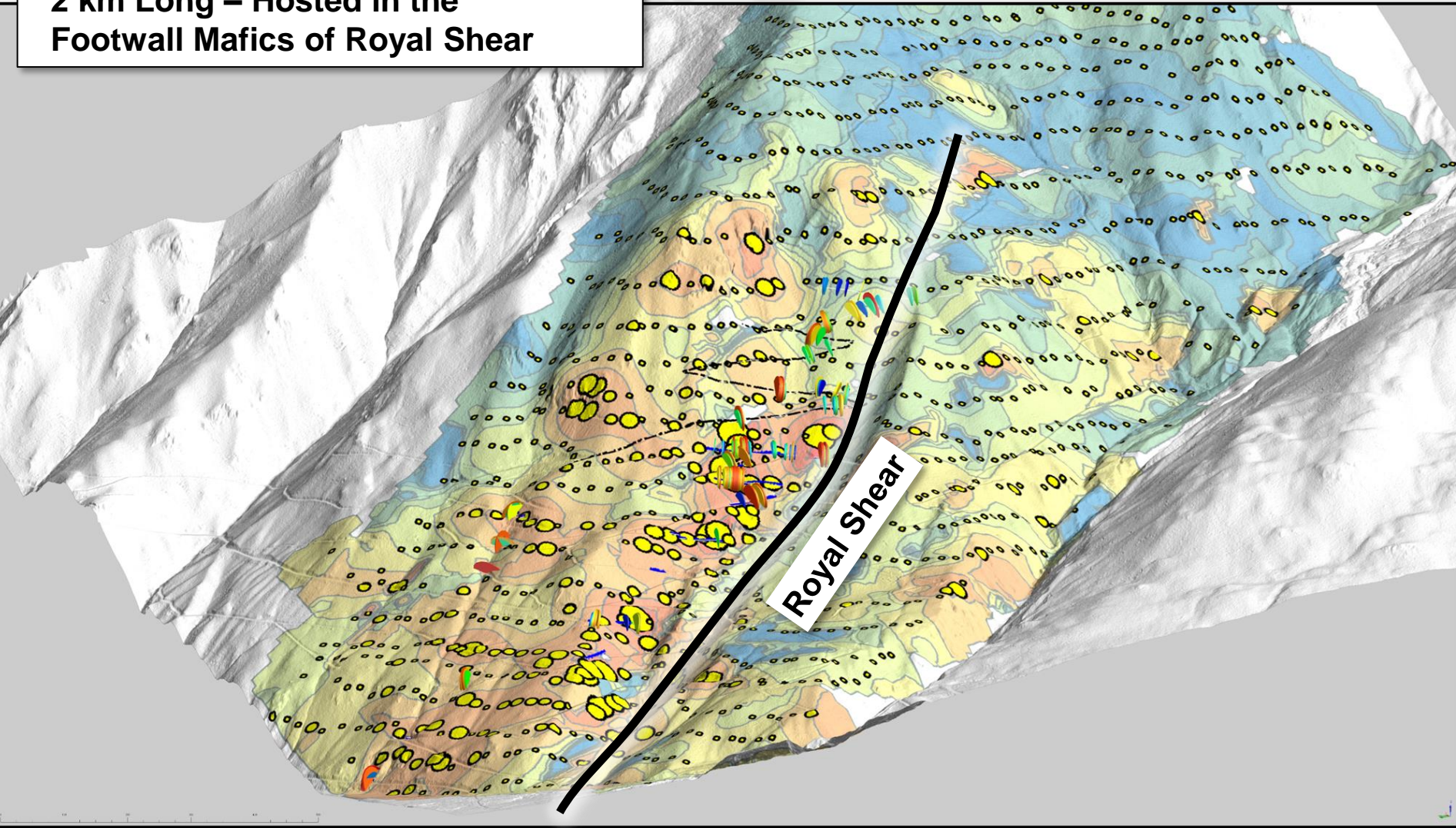
# Royal Shear

- Focal point of intense iron-carbonate and sericite alteration
  - **2 km strike** and up to **200 m width**
- Reverse-oblique shear zone
  - Hangingwall: Argillite and Chert
  - Footwall: Mafic Flows
- Gold mineralization (to date) has only been identified in footwall mafics
  - Quartz-Ankerite-Arsenopyrite multigenerational breccia zones and extensional vein arrays
  - Localized stibnite as massive breccia infill and late quartz-carbonate banded/colloform veins

- **Defined 2 km-long Biogeochem Anomaly along Royal Shear**
  - Needed to ‘see through’ Bridge River Ash
  - Followed by talus-fines soil samples, roadcut channel samples, RC drilling
- **Grass-roots surface discovery at Eagle Zone**
  - Extended to 550 m surface footprint
- **RC and DDH tested 1.5 km of Royal Shear**
  - **40 of 84 RC** holes returned **> 10 gram\*m**
  - **53 of 82 DDH** holes returned **> 10 gram\*m**
  - **15 DDH** holes returned **> 70 gram\*m**



**Biogeochem Arsenic Anomaly**  
2 km Long – Hosted in the  
Footwall Mafics of Royal Shear



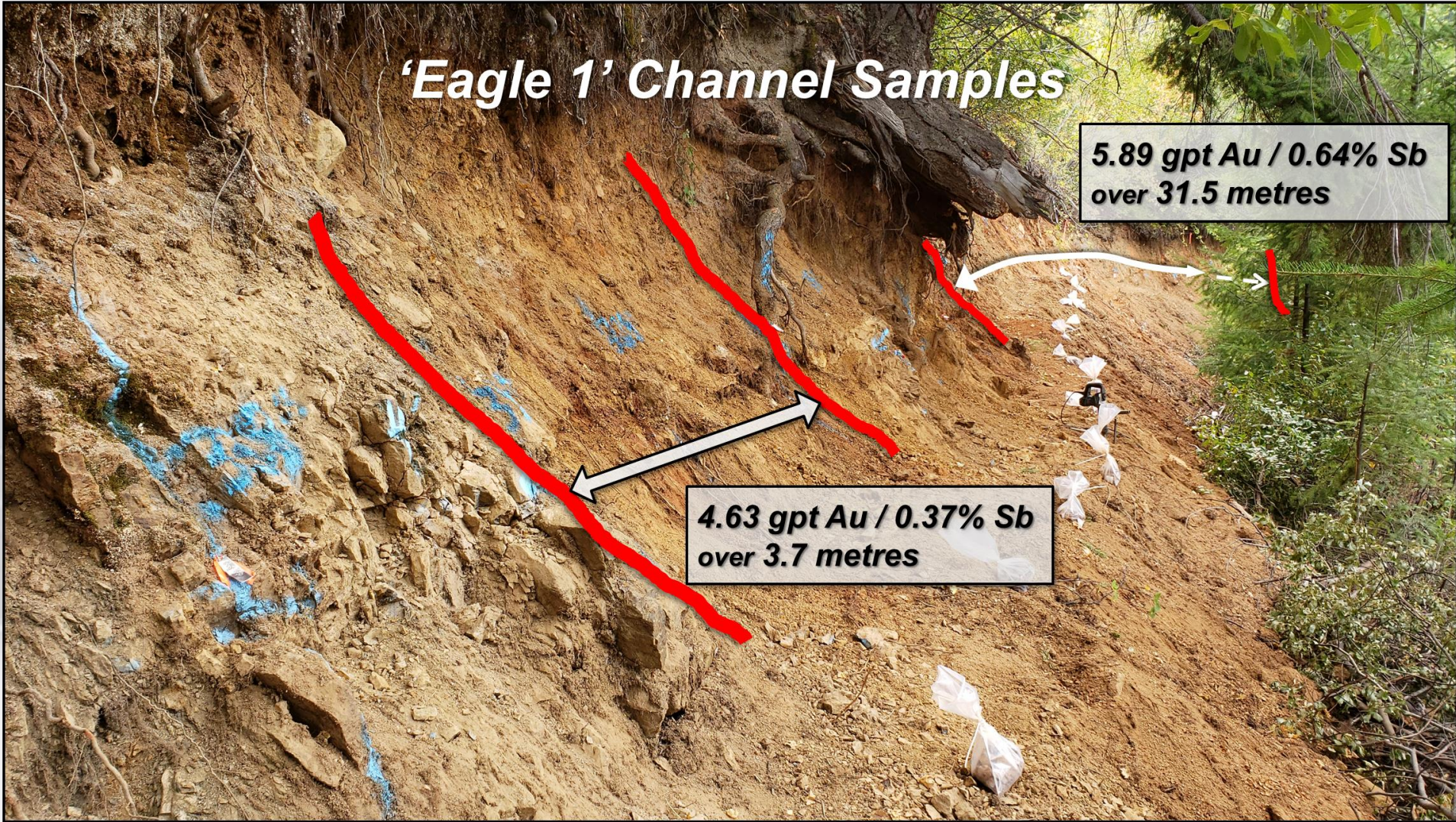


# Eagle Channel Samples

## 'Eagle 1' Channel Samples

**5.89 gpt Au / 0.64% Sb  
over 31.5 metres**

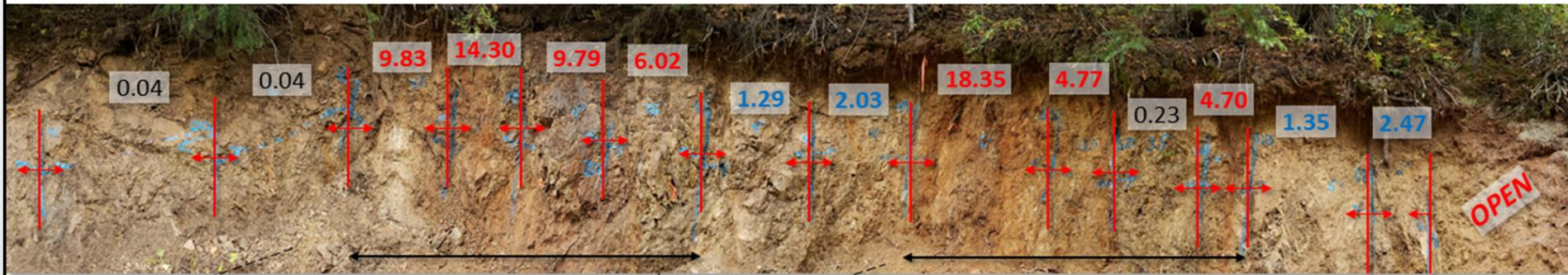
**4.63 gpt Au / 0.37% Sb  
over 3.7 metres**



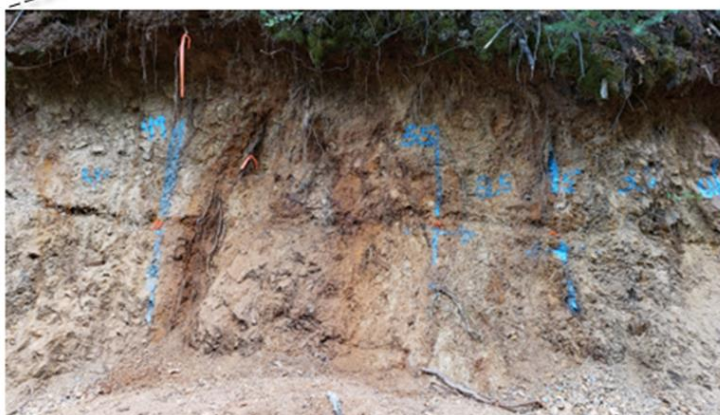


# Eagle South Channel Samples

**6.92 g/t Au over 13.4 metres**



**9.82 g/t Au over 4.6 metres**



**9.44 g/t Au over 4.3 metres**

Sample ID	From (m)	To (m)	Width (m)	Au (g/t)
B838715	0.0	1.2	1.2	0.04
B838716	1.2	2.4	1.2	0.02
B838717	2.4	4.3	1.8	0.03
B838718	4.3	6.1	1.8	0.04
B838719	6.1	7.9	1.8	0.04
<b>B838721</b>	<b>7.9</b>	<b>9.3</b>	<b>1.4</b>	<b>9.83</b>
<b>B838722</b>	<b>9.3</b>	<b>10.2</b>	<b>0.9</b>	<b>14.30</b>
<b>B838723</b>	<b>10.2</b>	<b>11.4</b>	<b>1.2</b>	<b>9.79</b>
<b>B838724</b>	<b>11.4</b>	<b>12.5</b>	<b>1.1</b>	<b>6.02</b>
B838725	12.5	13.7	1.2	1.29
B838726	13.7	14.9	1.2	2.03
<b>B838727</b>	<b>14.9</b>	<b>16.8</b>	<b>1.8</b>	<b>18.35</b>
B838728	16.8	17.5	0.8	4.77
B838729	17.5	18.6	1.1	0.23
<b>B838731</b>	<b>18.6</b>	<b>19.2</b>	<b>0.6</b>	<b>4.70</b>
B838732	19.2	20.7	1.5	1.35
B838733	20.7	21.3	0.6	2.47

# Reliance Gold Project, B.C.

## Best Diamond Drill Holes 2021 to 2023

<u>Zone &amp; DDH</u>	<u>From</u>	<u>g/t X m</u>	<u>Au g/t / Metre</u>
Eagle - 22-058	32.1	426	3.05 gpt / 139.9m
Eagle - 21-020	33.3	389	15.70 gpt / 24.8m
Imperial - 21-009	161.0	210	8.47 gpt / 24.9m
Eagle - 21-006	25.6	210	8.62 gpt / 24.4m
Eagle - 23-076	9.3	133	5.80 gpt / 23.0m
Eagle - 22-027	109.2	124	4.16 gpt / 30.0m
Eagle - 22-026	80.4	108	8.06 gpt / 13.5m
Eagle - 22-024	27.0	100	8.41 gpt / 12.0m
Eagle - 22-036	35.4	97	7.65 gpt / 12.7m
Eagle - 22-031	124.9	90	7.58 gpt / 11.9m
Eagle - 22-045	35.1	84	7.31 gpt / 11.6m
Eagle - 21-004	1.0	84	4.44 gpt / 19.0m
Imperial - 23-065	212.8	83	8.98 gpt / 9.3m
Eagle - 22-028	97.0	82	2.59 gpt / 31.6m
Imperial - 23-066	306.5	72	17.28 gpt / 4.2m



# Reliance Gold Project, B.C.

## Best Diamond Drill Holes 2021 to 2023

<u>Zone &amp; DDH</u>	<u>From</u>	<u>g/t X m</u>	<u>Au g/t / Metre</u>
Eagle - 22-058	32.1	426	3.05 gpt / 139.9m
Eagle - 21-020	33.3	389	15.70 gpt / 24.8m
Imperial - 21-009	161.0	210	8.47 gpt / 24.9m
Eagle - 21-006	25.6	210	8.62 gpt / 24.4m
Eagle			3.0m
Eagle			0.0m
Eagle			3.5m
Eagle			2.0m
Eagle			2.7m
Eagle			1.9m
Eagle			1.6m
Eagle - 21-004	1.0	84	4.44 gpt / 19.0m
Imperial - 23-065	212.8	83	8.98 gpt / 9.3m
Eagle - 22-028	97.0	82	2.59 gpt / 31.6m
Imperial - 23-066	306.5	72	17.28 gpt / 4.2m

**53 of 82 DDH holes returned > 10 gram\*m**

- 88 Drill Intersections > 10 gram\*m
- Multiple Intersections per Hole

**15 of 82 DDH holes returned > 70 gram\*m**

# Reliance Gold Project Royal Shear Surface Geology



## REPORTED GOLD INTERCEPTS

5.00 gpt Gold / 9.8 m

2023 Diamond Drill Intercept

## DRILLING BY ENDURANCE GOLD

- Diamond Drill Hole
  - Reverse Circulation (RC) Drill Hole
- Select drill traces shown Au = Gold

## MINERALIZATION

- Surface Exposed Mineralization
- Mineralization Trend Projected from depth

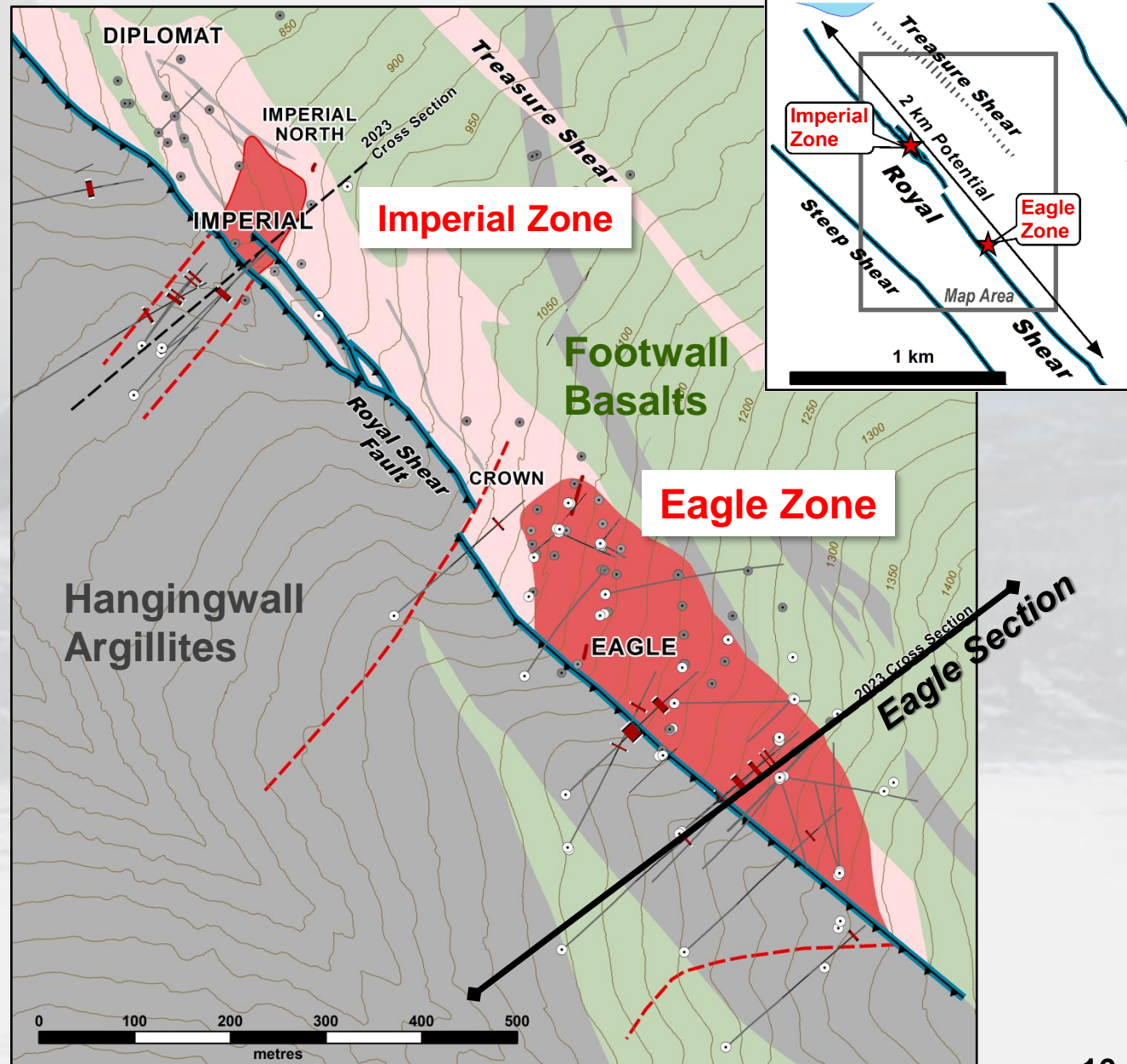
## GEOLOGY

### ALTERATION

- Ankerite Alteration +/- Quartz

### ROCK TYPE

- Mafic Volcanic / Gabbro
- Argillite and Chert





# Eagle Vertical Section

SW

NE

Elev. (m)

1300  
1250  
1200  
1150  
1100  
1050  
1000  
950  
900

1300  
1250  
1200  
1150  
1100  
1050

**RS Reverse Fault**  
**Flat Extensional Bx**  
**Tested to 250m vertical**  
**7.91 Au / 3.7m**

**Royal Shear Fault**

**Eagle South**

**Eagle Zone**

**3.50 gpt Gold**  
**10.0 m**

**4.16 gpt Gold**  
**30.0 m**

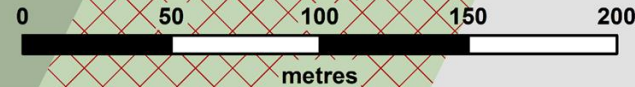
**1.79 gpt Gold**  
**6.9 m**

**7.91 gpt Gold**  
**3.7 m**

**3.05 gpt Gold**  
**139.9 m**

**2.59 gpt Gold**  
**31.60 m**

**2.13 gpt Gold**  
**15.2 m**

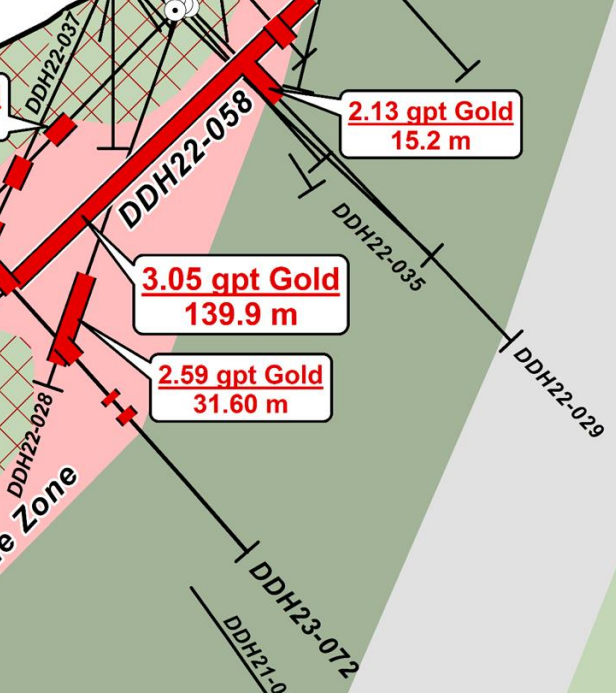


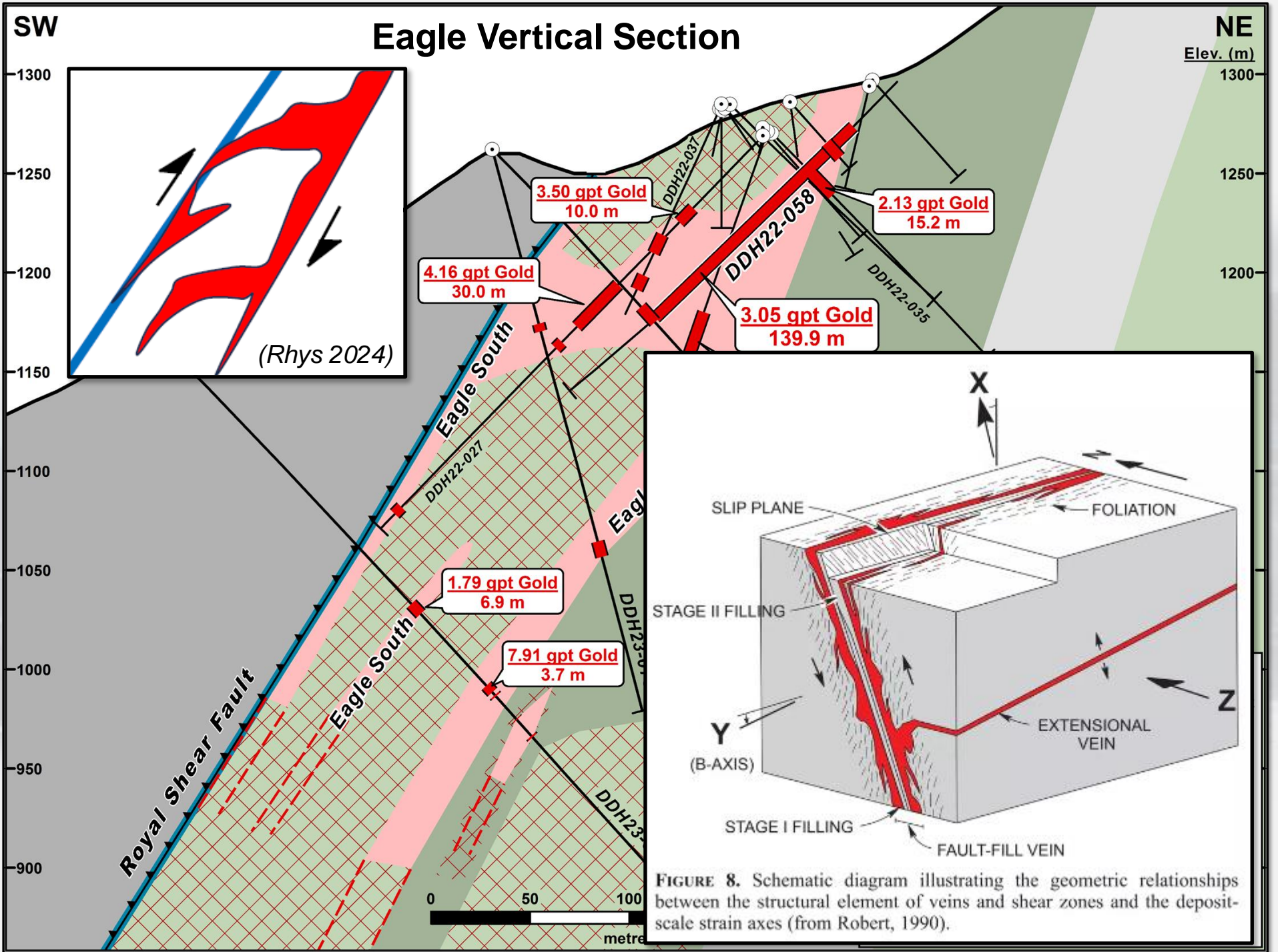
**REPORTED GOLD INTERCEPTS**

2022-23 Diamond Drill & RC Drill Intercept

**GEOLOGY**

- Mineralized Zone**
- Mafic Volcanic  
*Ankerite - Sericite Altered*
- Mafic Volcanic
- Gabbro
- Chert
- Argillite & Chert







# Eagle Zone '020 Extensional Breccia'

## DDH21-020

Hole ID	From (m)	To (m)	Length (m)	Sample ID	Au g/t	Ag ppm	As ppm	Sb ppm
DDH21-020	25.4	27.4	2	C965316	0.015	0.1	11.9	5.14
DDH21-020	27.4	29.4	2	C965317	0.026	0.25	54.3	45.4
DDH21-020	29.4	31.4	2	C965318	0.07	0.2	73.7	71.7
DDH21-020	31.4	33.3	1.9	C965319	0.033	0.14	23.6	76.1
DDH21-020	33.3	35.3	2	C965321	7.04	1.36	3660	1060
DDH21-020	35.3	37.3	2	C965322	4.99	1.8	2730	2690
DDH21-020	37.3	39.3	2	C965323	18.85	3.61	9250	12100
DDH21-020	39.3	41.3	2	C965324	19.35	3.67	8870	13800
DDH21-020	41.3	43.3	2	C965325	17.55	3.65	8630	3380
DDH21-020	43.3	45	1.7	C965326	11.1	3.12	8270	807
DDH21-020	45	45.9	0.9	C965327	14.45	4.23	7630	609
DDH21-020	45.9	47.9	2	C965328	26.4	2.34	7190	1220
DDH21-020	47.9	50	2.1	C965329	27.5	3.2	6930	9800
DDH21-020	50	51.4	1.4	C965331	6.24	0.75	1650	1340
DDH21-020	51.4	53.4	2	C965332	13.25	3.47	4830	1085
DDH21-020	53.4	55.4	2	C965333	16.15	7.63	5920	4390
DDH21-020	55.4	57.4	2	C965334	16.45	2.71	8400	931
DDH21-020	57.4	58.1	0.7	C965335	15.55	2.73	6850	7940
DDH21-020	58.1	60	1.9	C965336	0.684	0.34	1125	120.5
DDH21-020	60	62	2	C965337	0.029	0.08	18.6	36.1
DDH21-020	62	64	2	C965338	0.038	0.1	21	45.5

**15.7 gpt gold over 24.8 m including  
26.96 gpt gold over 4.1 m**

## DDH22-026

Hole ID	From (m)	To (m)	Length (m)	Sample ID	Au g/t	Ag ppm	As ppm	Sb ppm
DDH22-026	76.4	77.4	1.0	H610701	0.07	0.1	72	11
DDH22-026	77.4	79.4	2.0	H610702	0.00	0.2	9	4
DDH22-026	79.4	80.4	1.0	H610703	0.17	0.4	122	39
DDH22-026	80.4	82.4	2.0	H610704	3.09	1.2	2860	1200
DDH22-026	82.4	83.5	1.1	H610706	9.76	2.4	5900	1740
DDH22-026	83.5	85.4	1.9	H610707	10.75	3.5	7840	1490
DDH22-026	85.4	86.5	1.1	H610708	7.33	1.8	2950	465
DDH22-026	86.5	88.4	1.9	H610709	3.27	1.5	1745	3580
DDH22-026	88.4	89.4	1.0	H610710	12.50	2.1	5650	1655
DDH22-026	89.4	90.8	1.3	H610711	9.06	2.3	4450	198
DDH22-026	90.8	91.4	0.7	H610712	11.35	3.2	6000	668
DDH22-026	91.4	92.6	1.2	H610713	7.36	1.6	3240	157
DDH22-026	92.6	93.9	1.3	H610714	12.55	2.2	5390	416
DDH22-026	93.9	95.6	1.6	H610716	0.37	0.3	354	38
DDH22-026	95.6	96.2	0.6	H610717	0.01	0.1	12	5
DDH22-026	96.2	96.8	0.6	H610718	0.01	0.1	73	6

**8.06 gpt gold over 13.5 m including  
10.41 gpt gold over 5.5 m**

**Consistently mineralized over entire intervals**

# Reliance Gold Project

DDH21-020 – **15.7 gpt Gold over 24.8 m**

## MINERALIZED BRECCIA TEXTURES Coxcomb / Cockade Quartz-Carb Bx Veins



**@37 m**  
**4.99 gpt Gold over 2.0 m**



**@49 m**  
**27.5 gpt Gold /  
2.1 m**



**@54 m**  
**16.15 gpt Gold over 2.0 m**

**NQ Core**



**@58 m**  
**15.55 gpt Gold over 0.7 m**



## Reliance Gold Project Eagle Mineralized Breccia Textures

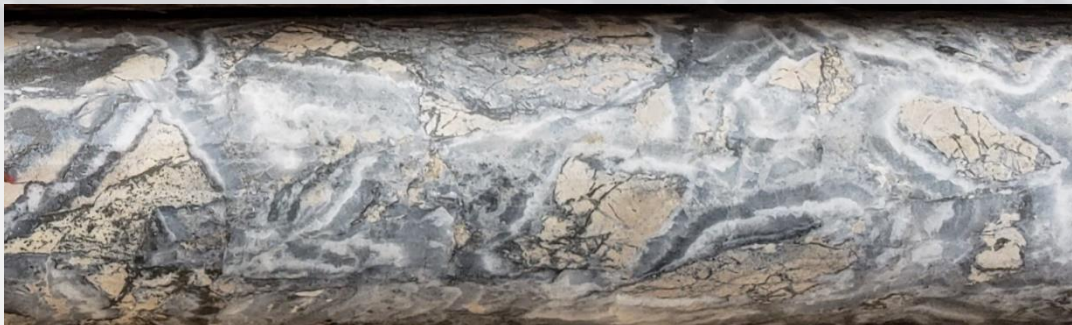
**Gold - Arsenopyrite Quartz Breccia (Cataclastite) 6.19 gpt Gold over 0.85 m**



**DDH22-027  
@ 116.4m**

**on 027 Vein  
Margin**

**Gold - Aspy "Coxcomb" Quartz Breccia 14.35 gpt Au /2.0 m**



**DDH22-031  
@ 128 m**

# Reliance Gold Project

## Visible Gold in 2023 Drilling: DDH23-078

**DDH23-078 Visible gold in “Coxcomb” Quartz Vein BX  
9.67 gpt Gold / 1.2 m**





# Reliance Gold Project Royal Shear Surface Geology



## REPORTED GOLD INTERCEPTS

5.00 gpt Gold / 9.8 m

2023 Diamond Drill Intercept

## DRILLING BY ENDURANCE GOLD

- Diamond Drill Hole
  - Reverse Circulation (RC) Drill Hole
- Select drill traces shown Au = Gold

## MINERALIZATION

- Surface Exposed Mineralization
- Mineralization Trend Projected from depth

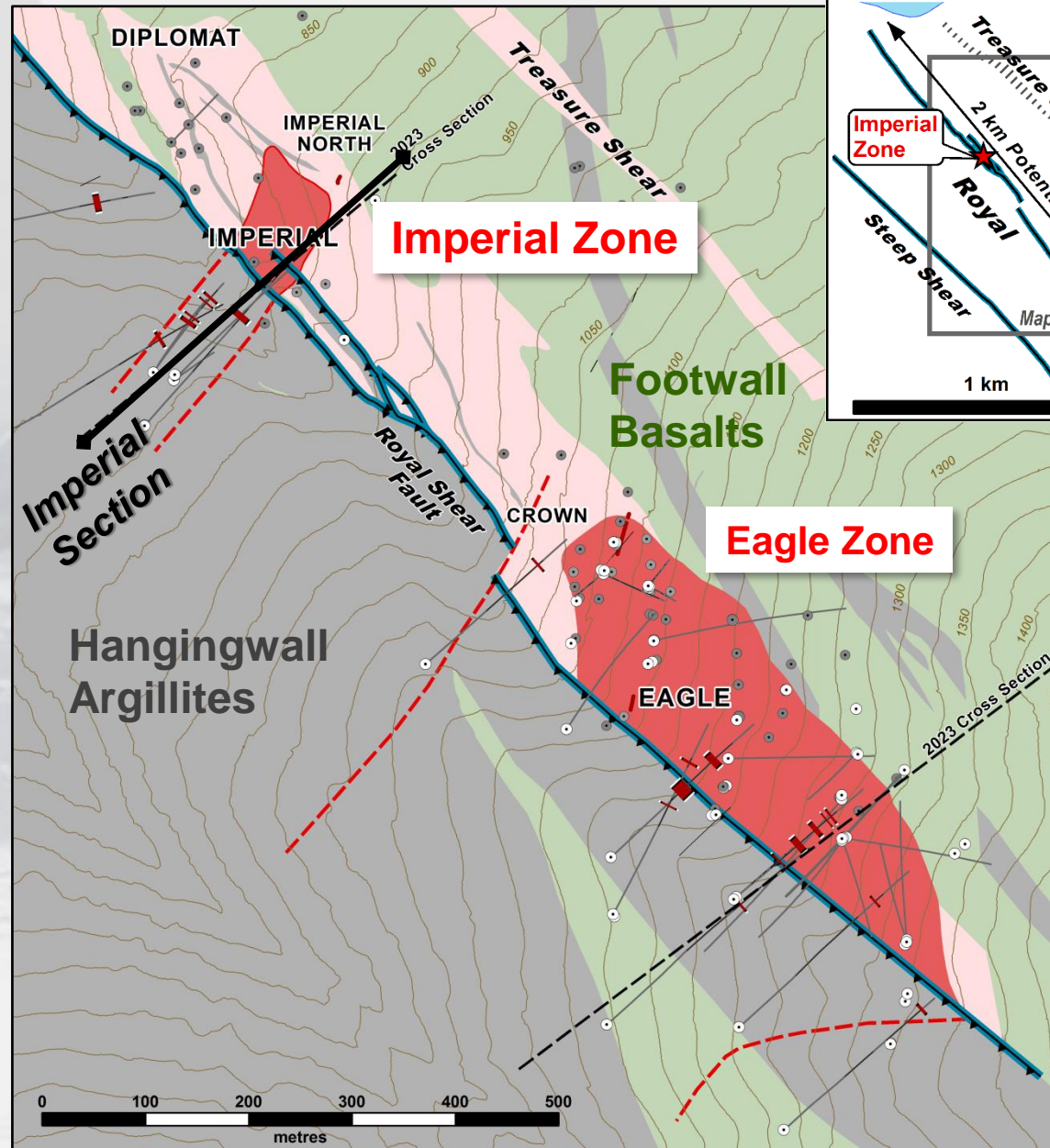
## GEOLOGY

### ALTERATION

- Ankerite Alteration +/- Quartz

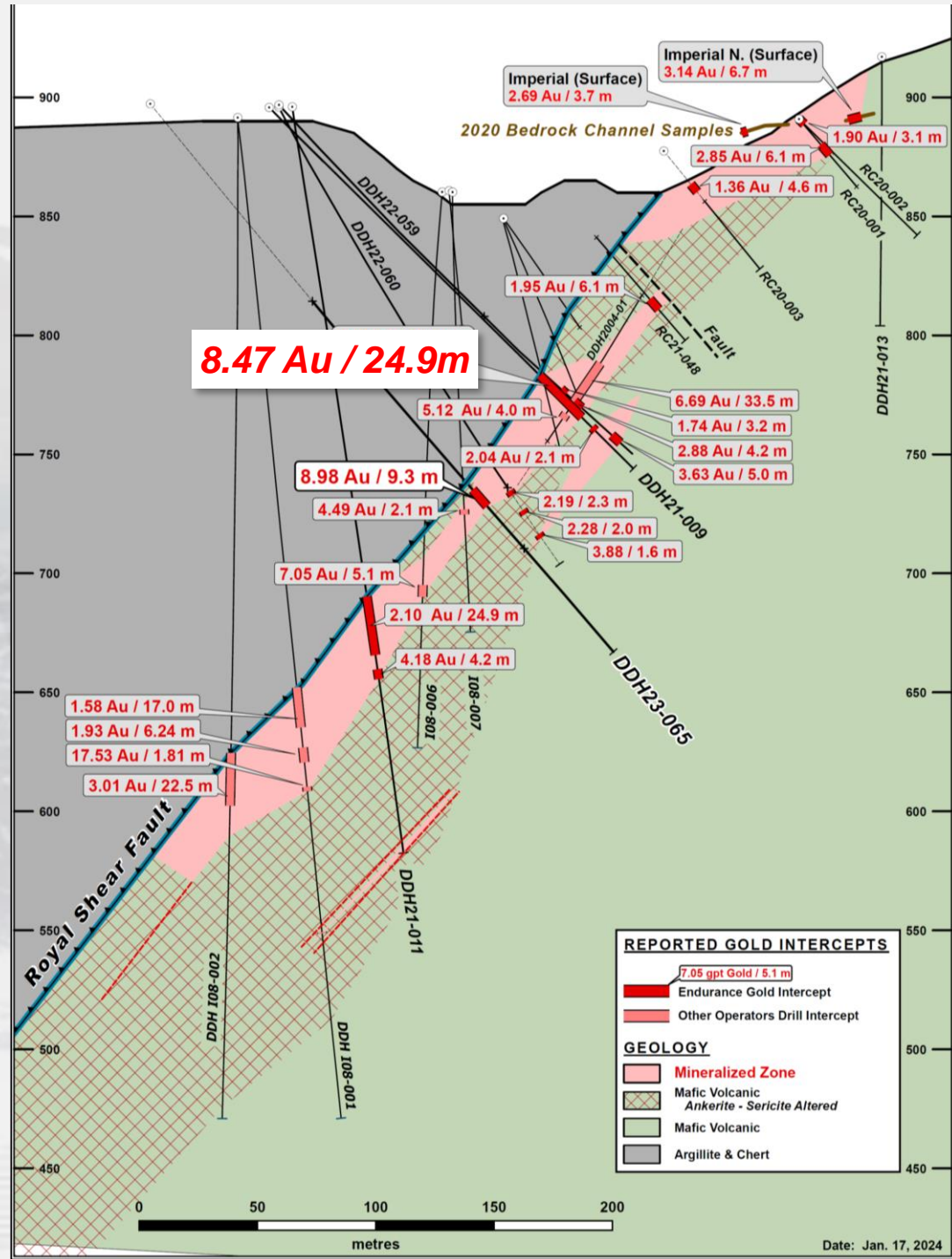
### ROCK TYPE

- Mafic Volcanic / Gabbro
- Argillite and Chert



# Imperial Zone Vertical Section

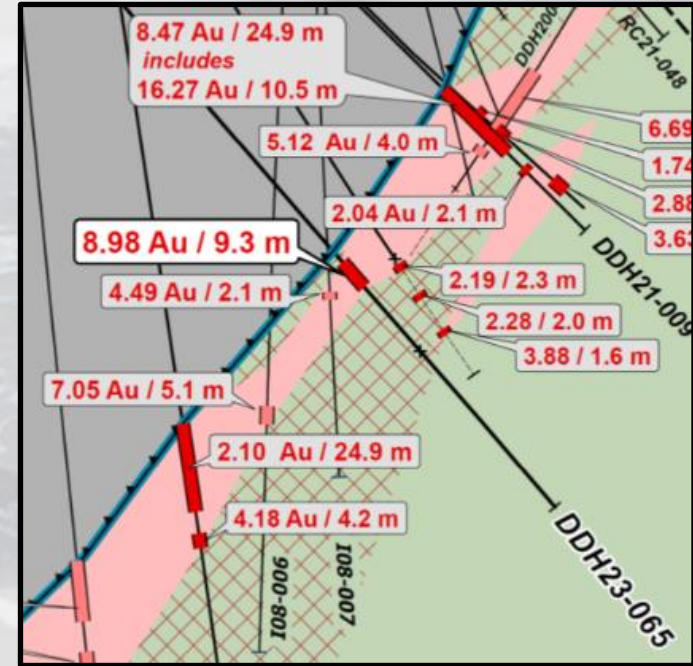
- Mineralization defined for 300m vertical (~600m MSL)
  - 17.5 Au / 1.8m
  - 3.01 Au / 22.5m
  - 17.28 Au / 4.2m
- Only tested along strike for 100m
  - Alteration zone widening at depth
- 500m untested gap between Eagle and Imperial
- DDH21-009 possible extensional breccia similar to Eagle
  - 8.47 Au / 24.9m**





## DDH23-065

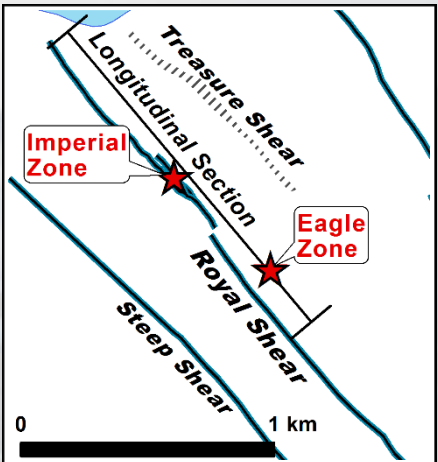
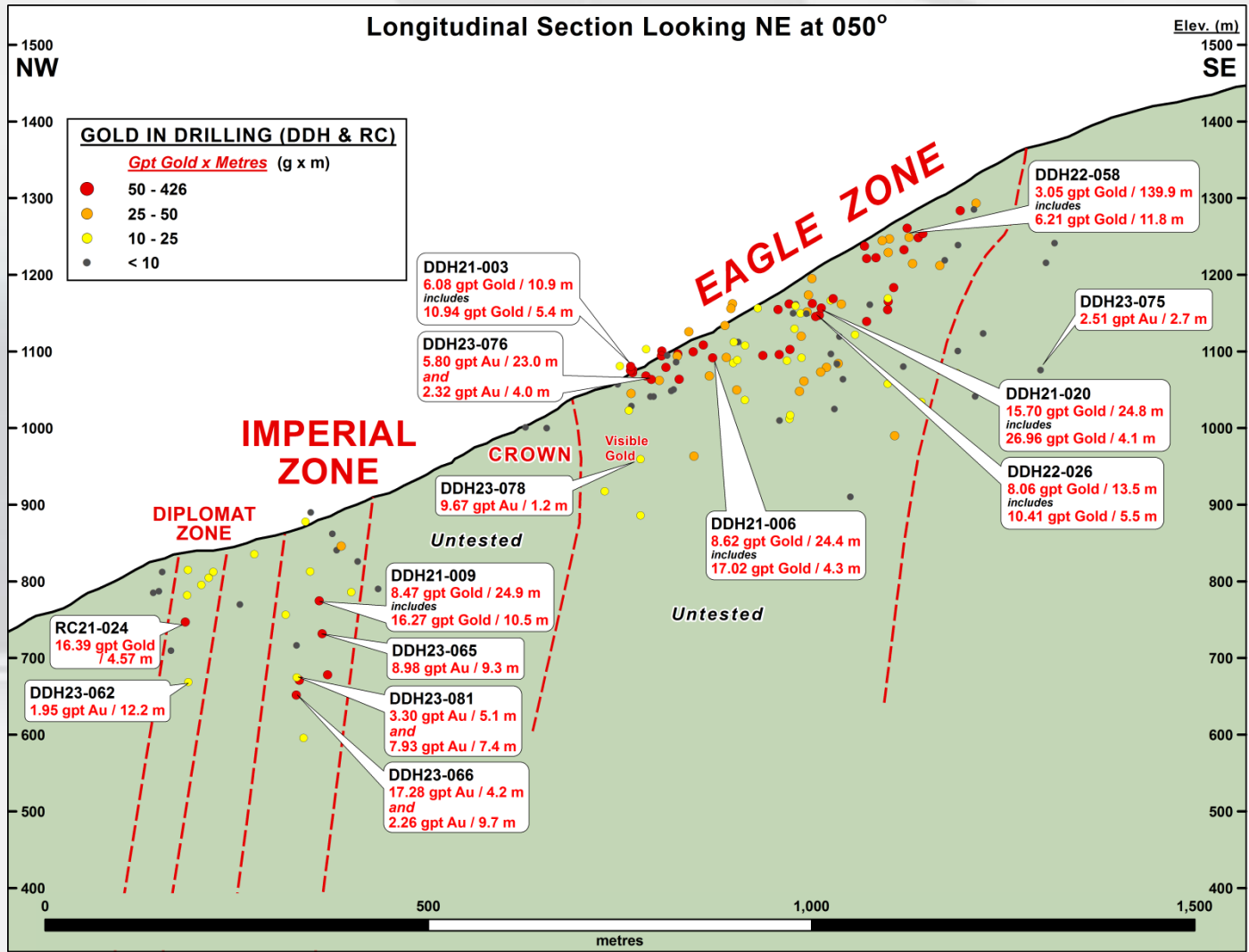
Hole ID	From (m)	To (m)	Length (m)	Sample ID	Au g/t	Ag ppm	As ppm	Sb ppm
DDH23-065	207.2	208.7	1.5	L640096	0.026	0.13	120	10.2
DDH23-065	208.7	209.8	1.1	L640097	0.055	0.34	258	19.65
DDH23-065	209.8	210.8	1.0	L640098	0.306	0.53	988	107.5
DDH23-065	210.8	211.8	1.0	L640099	0.195	0.54	293	39
DDH23-065	211.8	212.8	1.0	L640100	0.293	0.51	427	69.2
DDH23-065	212.8	213.8	1.0	L640101	23.2	4.74	7200	10000
DDH23-065	213.8	214.8	1.0	L640102	11.5	2.55	4440	1975
DDH23-065	214.8	215.8	1.0	L640103	9.67	1.64	4750	642
DDH23-065	215.8	216.8	1.0	L640104	6.04	1.36	4460	579
DDH23-065	216.8	217.8	1.0	L640105	15.2	1.24	4980	302
DDH23-065	217.8	218.8	1.0	L640106	9.03	3.34	4260	8920
DDH23-065	218.8	219.8	1.0	L640107	3.77	1.53	2030	7100
DDH23-065	219.8	220.8	1.0	L640108	0.043	0.07	67.7	68.7
DDH23-065	220.8	222.0	1.3	L640109	3.72	0.63	3720	2070
DDH23-065	222.0	222.5	0.5	L640111	0.005	0.04	64	59.9
DDH23-065	222.5	223.5	1.0	L640112	0.011	0.03	29.6	14.4



**8.98 gpt gold over 9.3 m including  
12.44 gpt gold over 6.0 m**

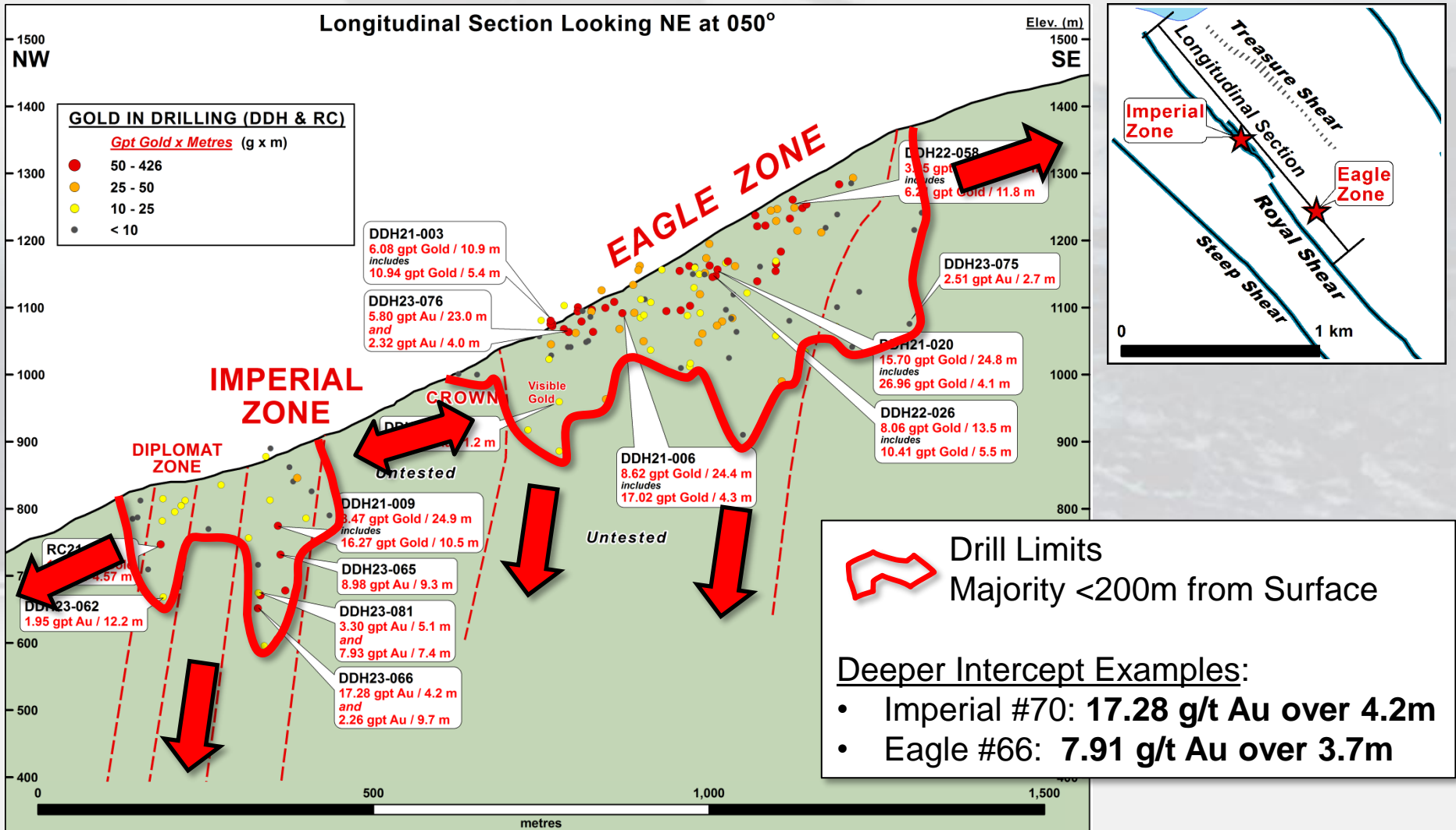
**Consistently mineralized over entire interval**

# Reliance Gold Project Royal Shear Longitudinal Section

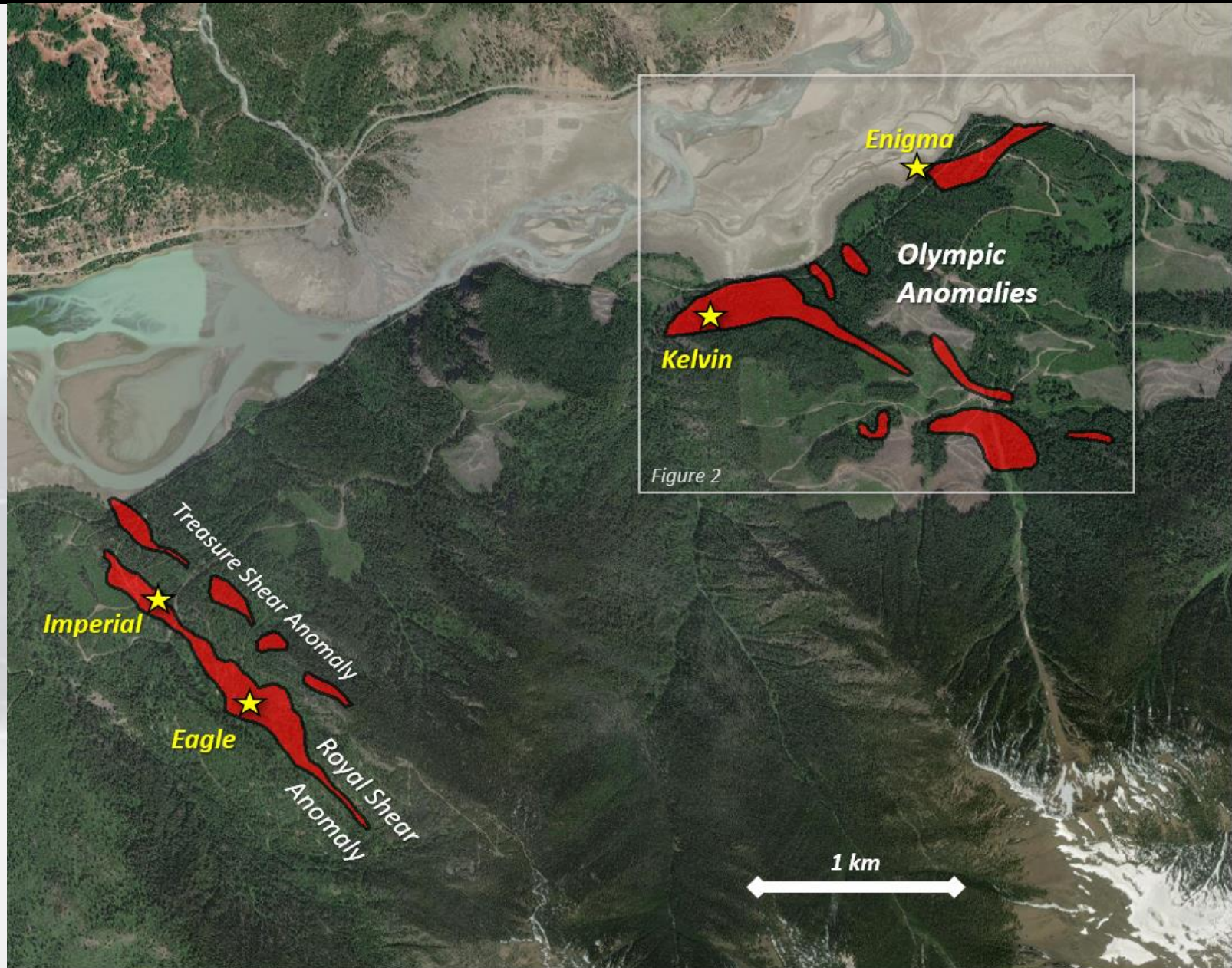




# Reliance Gold Project Royal Shear Longitudinal Section



# Reliance Gold Project, B.C. Eagle, Imperial & the Olympic Geochemical Anomalies







**Eagle Stibnite Grab**  
(0.83 g/t Au, 11.7% Sb)

**Enigma Stibnite Grab**  
(4.1 g/t Au, 6.8% Sb)



# Reliance Gold Project Conclusions and The Future

- New grass-roots, high-grade gold discovery in a historic mining camp
  - Consistent with “Epizonal” Orogenic Gold Model
  - Nearby 4.1 Moz Bralorne-Pioneer Mine
  - Indicates potential for a major gold system with depth continuity
  - Comparables: Fosterville Mine, Australia; Grey Fox, Abitibi; Upper parts of Hollinger Mine, Timmons
- Potential for a major gold system:
  - Large, intense iron-carbonate sericite alteration footprint
  - Highly successfully initial drilling results over a 1.5 km zone
  - Additional mineralized structures identified at Olympic
- Cost effective exploration in Bridge River Camp allowing systematic programs
  - Local communities with a mining history



# Reliance Gold Project 2024 Planned Program

- Up to 10,000 m of diamond drilling on the fully-permitted Royal Shear trend
- Geochemical surface sampling
  - Develop drill-ready targets at Upper Eagle, Enigma, Olympic soil grids
- Geological, structural, mineralogical and metallurgical studies
- Community consultation:
  - Drill permit application on the Olympic
- Continue environmental baseline studies
- Revise 3D geological model in anticipation of an inaugural mineral resource estimate

# Corporate Snapshot

<b>Shares Outstanding</b> <i>(April 5, 2024)</i>	151.9m
<b>Market Capitalization</b> <i>(C\$0.14 – April 5, 2024)</i>	C\$21.3 m
<b>Options</b> <i>(C\$0.05 – C\$0.34)</i>	7.4 m
<b>Warrants</b> <i>(C\$0.42 – C\$0.55)</i>	4.2 m
<b>Fully Diluted</b> <i>(April 5, 2024)</i>	163.5 m
<b>Working Capital</b> <i>(Sep 30, 2023)</i>	C\$2.59 m*

\* includes marketable securities



**Insiders  
own  
over 55%**

## Key People

**Robert T. Boyd**  
*President, CEO & Director*

**Darren O'Brien**  
*Vice President Exploration*

**Teresa Cheng**  
*CFO & Corporate Secretary*

**Richard Gilliam**  
*Director*

**H. Ross Arnold**  
*Director*

**Robert Pease**  
*Director*

**J. Christopher Mitchell**  
*Director*





[www.endurancegold.com](http://www.endurancegold.com)

Suite 1212 – 666 Burrard Street  
Vancouver, BC V6C 2X8 Canada  
Toll Free Phone: 877-624-2237

EDG: TSX.V | ENGF: OTC Pink | Frankfurt: 3EG